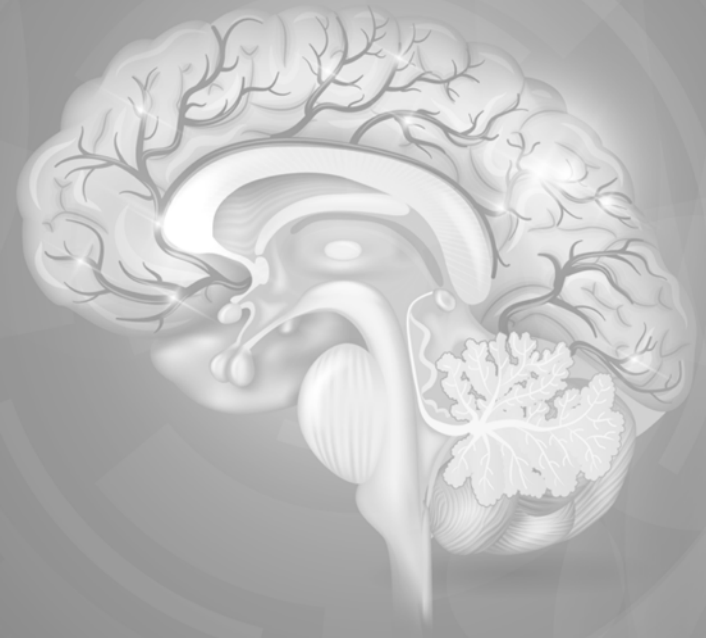


MASSACHUSETTS GENERAL HOSPITAL

# Cerebrovascular Future Care Symposium

JUNE 16, 2018 | BOSTON, MASSACHUSETTS



## Regional Care Networks

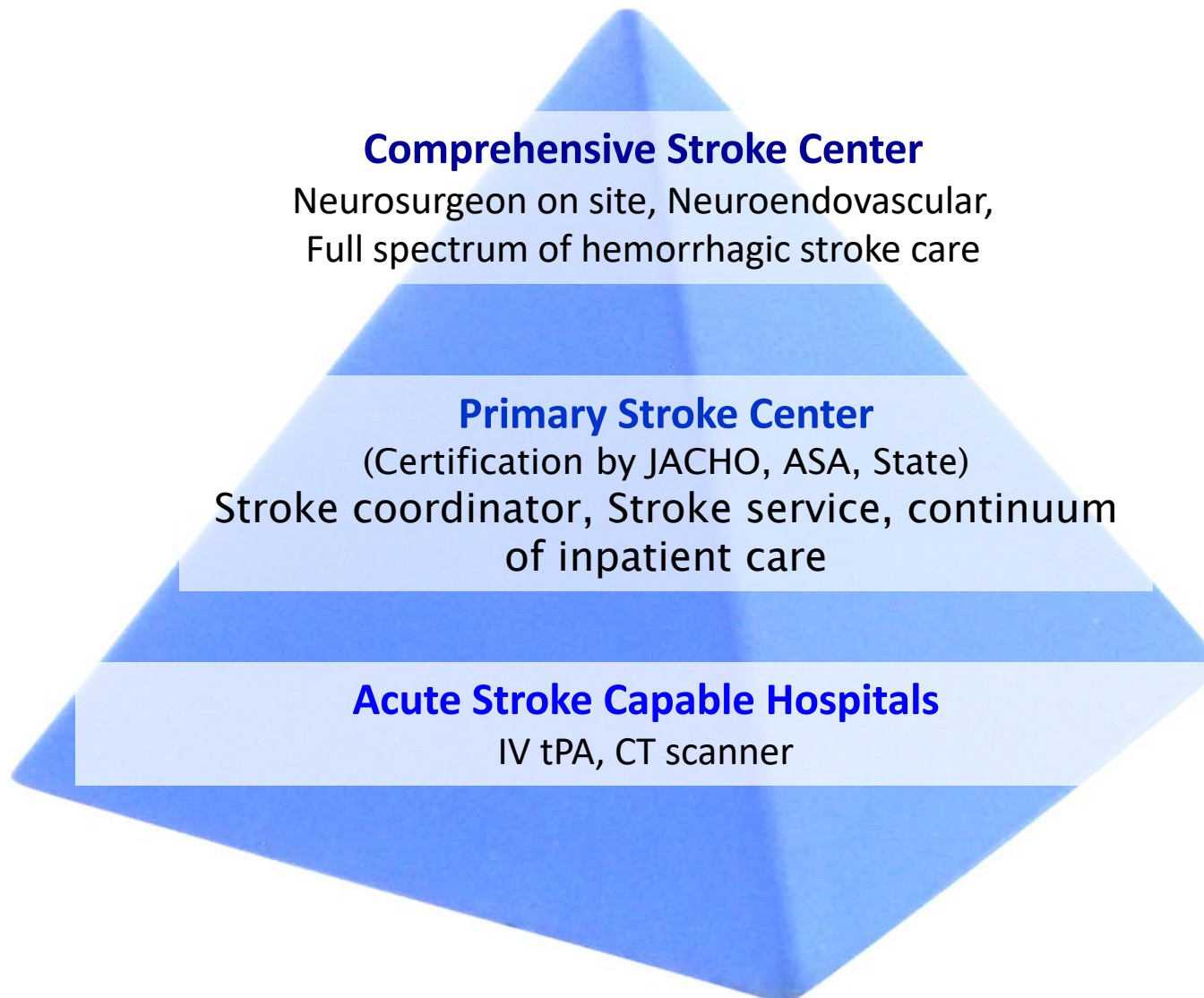
### Panel Discussion



MASSACHUSETTS  
GENERAL HOSPITAL

COMPREHENSIVE  
STROKE CENTER

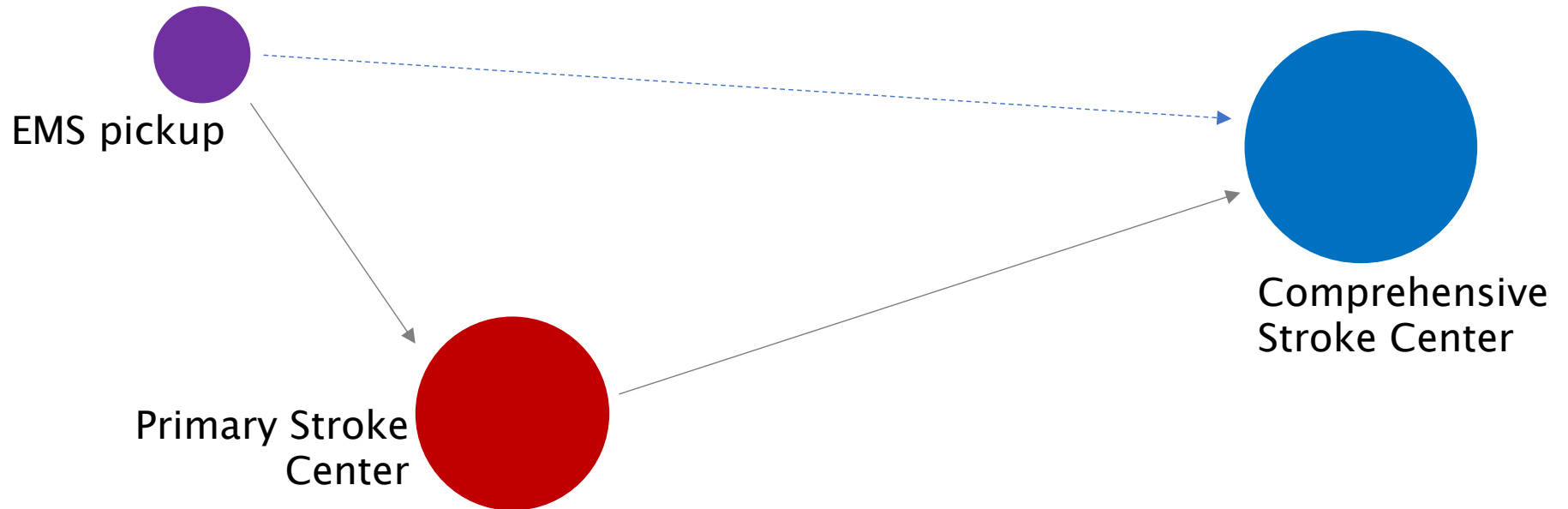
# Certification of Centers



MASSACHUSETTS  
GENERAL HOSPITAL

COMPREHENSIVE  
STROKE CENTER

# Bypass/Directed Transfer



Our system is designed for optimized tPA delivery to everyone. With LVO data should this change? And how?

# Mobile Stroke Units



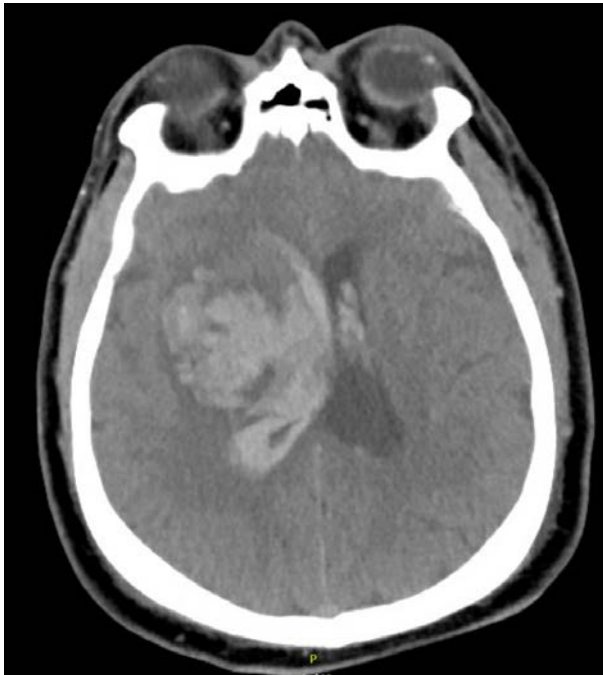
Does this make sense for Massachusetts?  
How would these be deployed?



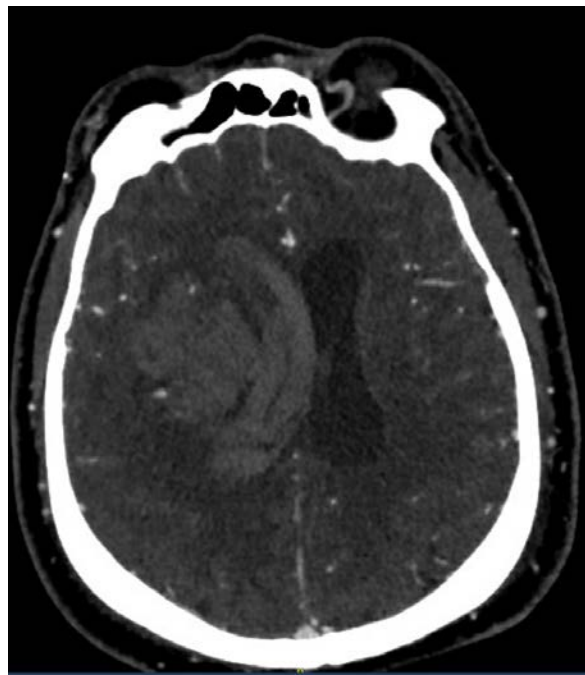
MASSACHUSETTS  
GENERAL HOSPITAL

COMPREHENSIVE  
STROKE CENTER

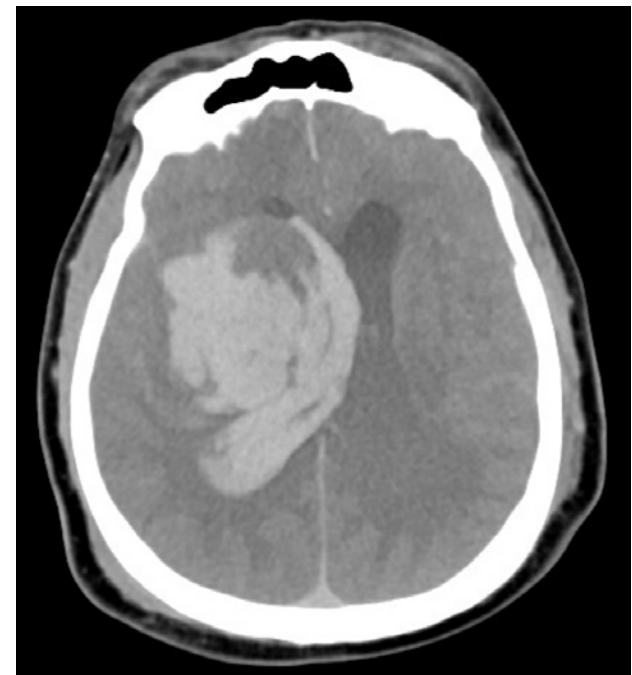
# Triage of ICH



Arrival to referring hospital



CTA  
Spot signs

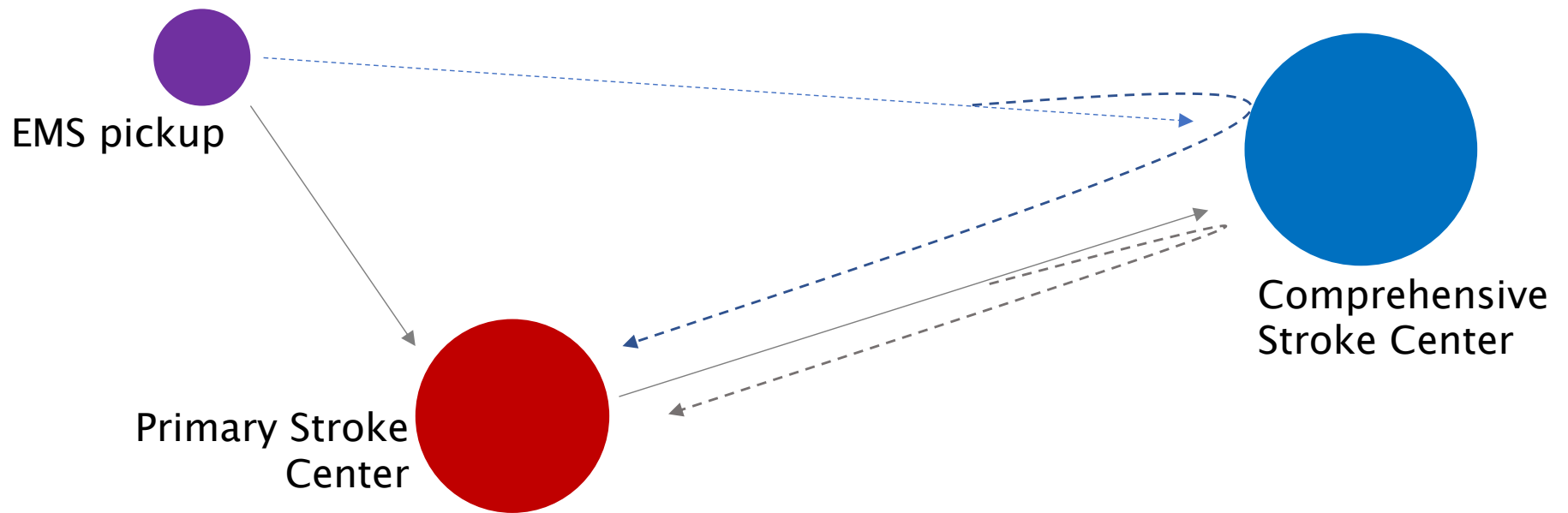


Arrival to receiving hospital

Who can stay local?

Who represents greatest risk?

# Repatriation



What problems does this solve?  
What are the barriers to adoption?  
How might this work?

# Rehabilitation at a Network Level



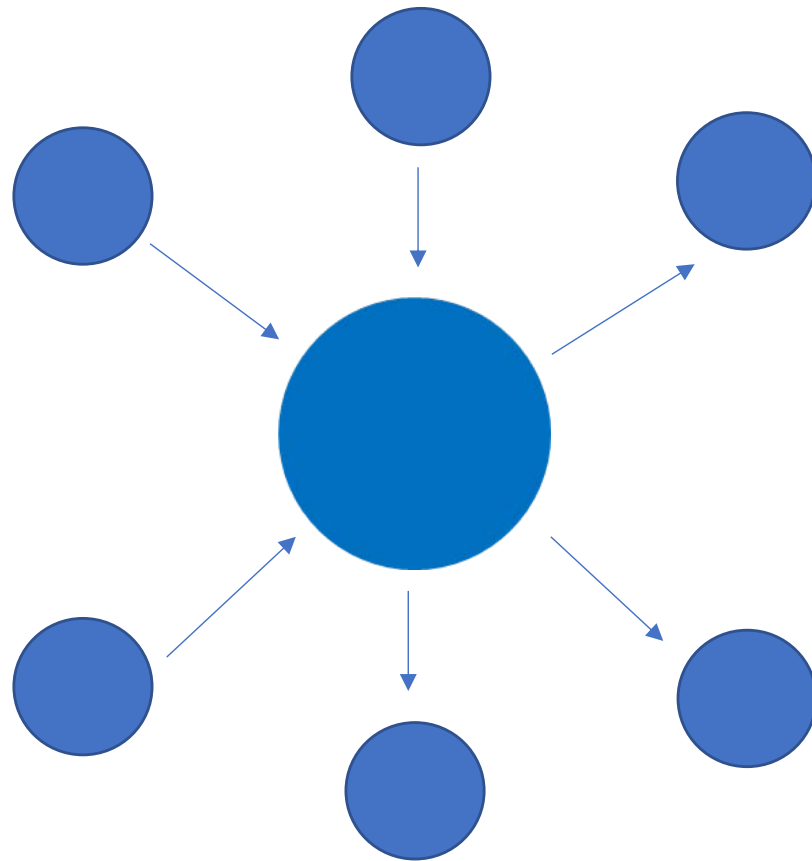
Are we meeting the demand?  
What post-acute environments are needed?



MASSACHUSETTS  
GENERAL HOSPITAL

COMPREHENSIVE  
STROKE CENTER

# Closed Care Networks



MASSACHUSETTS  
GENERAL HOSPITAL

COMPREHENSIVE  
STROKE CENTER